

# Construction Update DECEMBER 2024



Dear Valued Partner,

We are excited to share the latest construction updates of all  
our ongoing projects

SKYline

LEX

 Business Yard

 SIGMA

THE S Tower

# Design To Completion



## SKYline

Construction of the project is proceeding favourably well. The RCC structural framework has been completed. The Building's External envelop installation works are in progress.

Structure	29%
Façade	24%
Internal Finishes	5%



Scan the barcode to view the latest  
Construction update in 360°



# Design To Completion



## LEX

Construction of the project is proceeding favourably well. The RCC structural framework has been completed. The Building's External envelop installation works are in progress.

Structure	100%
Façade	90%
Internal Finishes	95%



Scan the barcode to view the latest  
Construction update in 360°



# Design To Completion



## SIGMA

Construction of the project is proceeding favourably well. The RCC structural framework has been completed. The Building's External envelop installation works are in progress.

Structure	100%
Façade	100%
Internal Finishes	100%



Scan the barcode to view the latest  
Construction update in 360°



# Design To Completion



## SUMOOD PROJECT

Construction of the project is proceeding favourably well. The RCC structural framework has been completed. The Building's External envelop installation works are in progress.

Structure	5%
Façade	0%
Internal Finishes	0%



# Design To Completion



## Business Yard

Construction of the project is proceeding favourably well. The RCC structural framework has been completed. The Building's External envelop installation works are in progress.

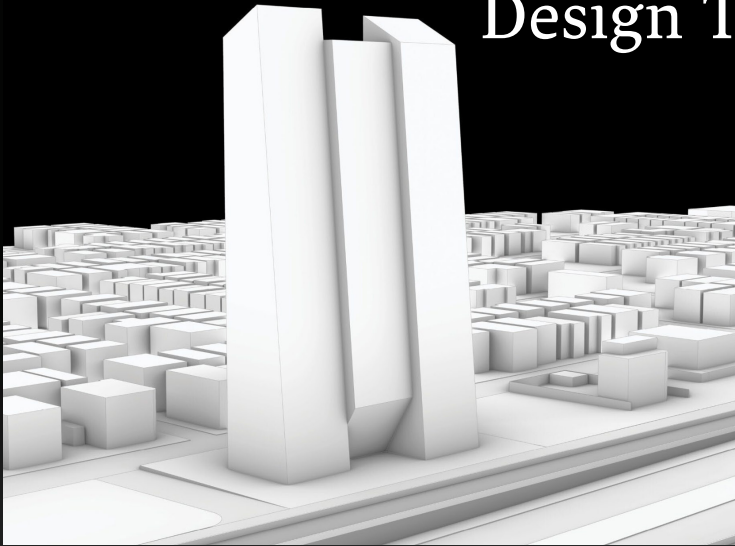
Structure	<div style="width: 97%;"><div style="width: 97%;"></div></div>	97%
Façade	<div style="width: 87%;"><div style="width: 87%;"></div></div>	87%
Internal Finishes	<div style="width: 10%;"><div style="width: 10%;"></div></div>	10%



Scan the barcode to view the latest  
Construction update in 360°



# Design To Completion



## THE S Tower

Construction of the project is proceeding favourably well. The RCC structural framework has been completed. The Building's External envelop installation works are in progress.

